

FERTILCONTROL^{light}

OVULATION TEST FOR
AUTO DIAGNOSTIC IN VITRO



READ CAREFULLY THE USE GUIDE



- 1 Remove the cap of the microscope to use it.



- 2 Remove the optical system.
Do not unscrew it.



- 3 Place a drop of saliva on the surface of the crystal. Allow the saliva sample to dry for 5 minutes. Try to avoid creating air bubbles.



- 4 When the saliva is dry, place again the optical system on its base.



- 5 Look into the lens and push the light button to observe the test result. To focus, rotate the lens while bringing it close to the eye.

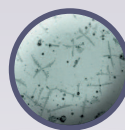
WOMEN'S FERTILITY TEST BY MEANS OF SALIVA

INTERPRETING TEST RESULTS

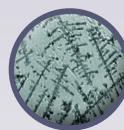
The right interpretation of the test result guarantees its reliability



NOT FERTILE
PERIOD



TRANSITIONAL
PERIOD



FERTILE
PERIOD

FertilControl Light is a pocket microscope that allows women to predict, their most fertile time of the month to conceive by means of saliva. FertControl Light last for over two years. We recommend the testing on a daily basis.

The accuracy of the ovulation determination is 98%. Eating, drinking and smoking can interfere with saliva fertility testing results. It is advisable to avoid these activities for two hours before collecting a sample.

The method has been invented by doctor Biel and doctor Papanicolau in the middle of the 40's.

- * EASY AND FAST
- * HYGIENIC
- * ALL-NATURAL
- * HIGH RELIABILITY
- * FOR PERSONA USE
- * REUSABLE FOR OVER TWO YEARS

DATE OF FIRST USE

...../...../.....



READ CAREFULLY THE USE GUIDE

WHAT IS IT FOR?

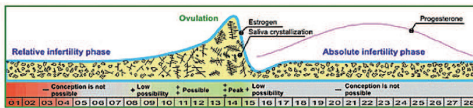
It is intended for predicting ovulation by means of saliva and let you know your most fertile time of the month to conceive. Its only purpose is to know the most fertile time in women. It should not be used as a contraceptive device, but as a handy and practical aid to family planning. It has been proven scientifically that spermatozoos can live for 72 hours inside the womb whereas the ovule only lives for 24 hours. That is why there are only from three to four fertile days in each menstrual cycle (the same day of the ovulation and the two or three previous days).

HOW IT WORKS

FertilControlLight is a mini-microscope with 65X magnification lens. During ovulation time women experience a marked increase in the presence of oestrogen, what allows the ovum to be released from the ovary. Ovulation usually occurs 14 days before the onset of bleeding. The oestrogen surge is present in women's saliva, blood and urine. As the level of oestrogen increases, the mineral salts in the saliva crystallize more easily. They can be viewed in ferning patterns in the device FertilControlLight.

ADVANTAGES

- No side-effects (nothing is consumed)
- Users do not commit moral outrage nor break any religious precept
- Being reusable is cheaper than other methods
- No discomfort
- Handy and discrete
- Clean and easy to use
- High reliability
- Comfortable and simple
- Educational (testing on a daily basis women will know their menstrual cycle)



Made by:

Manufactured by AEI 24 Ltda - Avenida de Cal 125, 4750-778, Barcelos, Portugal

RECOMMENDATIONS

- In order to avoid alteration of saliva avoid eating, smoking, or drinking for two hours before collecting a sample.
- It is advisable to collect a sample mid morning or mid afternoon, when saliva is more diluted, because early in the morning is more viscose and crystallization becomes difficult.
- In order to secrete more saliva you can bite slightly your tongue.
- Remove carefully the air bubbles in the saliva.
- Test on a daily basis and record results to control the menstrual cycle as shown below. In this way you can notice possible variations.
- After testing, clean the glass slide or lens using a damp cloth.

WARNINGS

- Inflammations and mouth infections (tonsillitis, dental gumboils, gingivitis...) as well as some drugs and hormonal therapies may interfere with test results.
- FertilControlLight should not be used as a contraceptive device, but as a method for determining women's most fertile time of the cycle. The right interpretation of the test result guarantees its reliability.
- This method does not protect you against venereal diseases such as AIDS virus, gonorrhoea, syphilis, etc.
- Keep the product away from children because it is made of small pieces.
- FertilControlLight fulfils the current regulations.
- As there are women whose menstrual cycle lasts more than 28 days, in the control strip below up to 35 sections have been included.
- The manufacturer and/or distributor of this product is not responsible for the wrong interpretation of test results.
- FertilControlLight must not be used by menopausal women, by those taking the contraceptive pill or by women under hormone therapy. After pregnancy it is advisable to wait for two months before reusing the product.

CE 1293

Model N. FC 18



Example of fertile days of the menstrual cycle



Control strip of the cycle to be filled in

